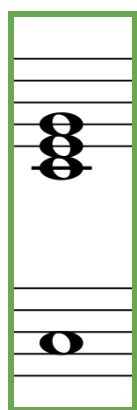


Chord Playing - Workshop #2

Review - Major / Minor Chords

	How to write:	Number of notes skipped between the chord-notes:
MAJOR	Upper Case: C, D, Eb, F#, A, G, etc	Skip 3 / Skip 2
MINOR	Upper Case + lower case <i>m</i> : Cm, Dm, Ebm, F#m, Am, Gm, etc	Skip 2 / Skip 3

“How Far I’ll Go” from *Moana*



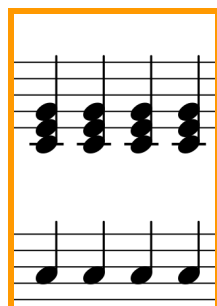
[Verse 1]

C **Dm**
I've been staring at the edge of the water

Am **F**
'Long as I can remember, ne-ver really knowing why

C **Dm**
I wish I could be the perfect daughter

Am **F**
But I come back to the water, no matter how hard I try



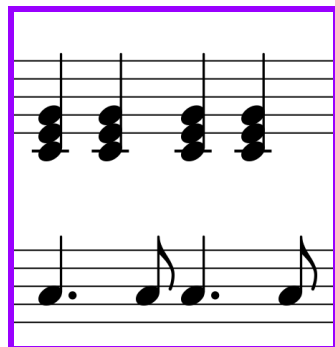
[Pre-Chorus 1]

Am
Every turn I take, every trail I track

G/B (Right hand plays G chord / Left hand plays note B)
Every path I make, every road leads back

C
To the place I know, where I cannot go

Fm (hold as a whole note)
Where I long to be



[Chorus]

C **G**
See the line where the sky meets the sea? It calls me

Am **F**
And no one knows, how far it goes

C **G**
If the wind in my sail on the sea stays behind me

Am **Fm** **C**
One day I'll know, if I go there's just no telling how far I'll go

If playing along with an original recording, use the following chords:

[Verse 1]

E F#m
I've been staring at the edge of the water
C#m A
'Long as I can remember, never really knowing why
E F#m
I wish I could be the perfect daughter
C#m A
But I come back to the water, no matter how hard I try

[Pre-Chorus 1]

C#m
Every turn I take, every trail I track
B/D#
Every path I make, every road leads back
E
To the place I know, where I cannot go
Am
Where I long to be

[Chorus]

E B
See the line where the sky meets the sea? It calls me
C#m A
And no one knows, how far it goes
E B
If the wind in my sail on the sea stays behind me
C#m Am E
One day I'll know, if I go there's just no telling how far I'll go

[Verse 2]

E F#m C#m
I know, everybody on this island seems so happy on this island
A
Everything is by design
E F#m C#m
I know, everybody on this island has a role on this island
A E/G#
So maybe I can roll with mine

[Pre-Chorus 2]

C#m
I can lead with pride, I can make us strong
B/D#

I'll be satisfied if I play along

E

But the voice inside sings a different song

Am

What is wrong with me?

[Chorus 2]

E

B

See the light as it shines on the sea? It's blinding

C#m

A

But no one knows, how deep it goes

E

B

And it seems like it's calling out to me, so come find me

C#m

A

And let me know, what's beyond that line, will I cross that line?

[Chorus 1]

F

C

See the line where the sky meets the sea? It calls me

Dm

Bb

And no one knows, how far it goes

F

C

If the wind in my sail on the sea stays behind me

Dm

Ab

Ab/G

Fm

Dmb

C

One day I'll know, how far I'll go